

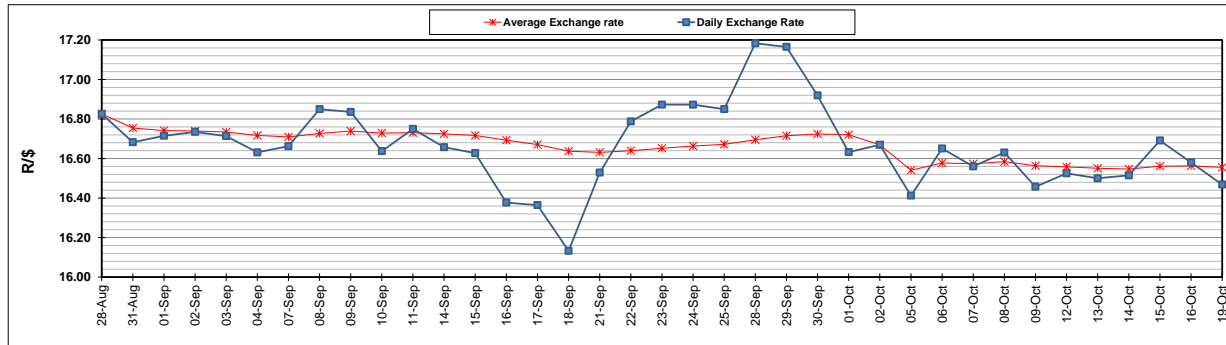
	PETROL 95 ULP	PETROL 93 ULP & LRP	DIESEL 0.05%	DIESEL 0.005%	ILL. PAR.
GAUTENG PUMP PRICE (SA c/l) AS FROM 07/10/2020	1,486.000	1,466.000	-	-	-
WHOLESALE PRICE (SA c/l) AS FROM 07/10/2020	-	-	1,237.560	1,238.960	640.828
SINGLE NATIONAL MAXIMUM RETAIL PRICE	-	-	-	-	798.000
BASIC FUEL PRICE - 19/10/2020 (SA c/l)	511.631	507.183	498.894	501.717	471.647
PRESS RELEASE CONTRIBUTION TO BFP 07/10/2020 - 19/10/2020 (SA c/l)	533.470	523.470	486.630	488.030	436.128
UNIT OVER/(UNDER) RECOVERY - 19/10/2020 (SA c/l)	21.839	16.287	(12.264)	(13.687)	(35.519)
AVERAGE BASIC FUEL PRICE 02/10/2020 - 19/10/2020	524.894	515.661	498.491	500.643	468.801
AVERAGE UNIT OVER/(UNDER) RECOVERY 02/10/2020 - 19/10/2020	16.576	13.559	10.639	10.637	(13.673)

ANALYSIS MOVEMENT OF AVERAGE OVER/(UNDER) RECOVERY

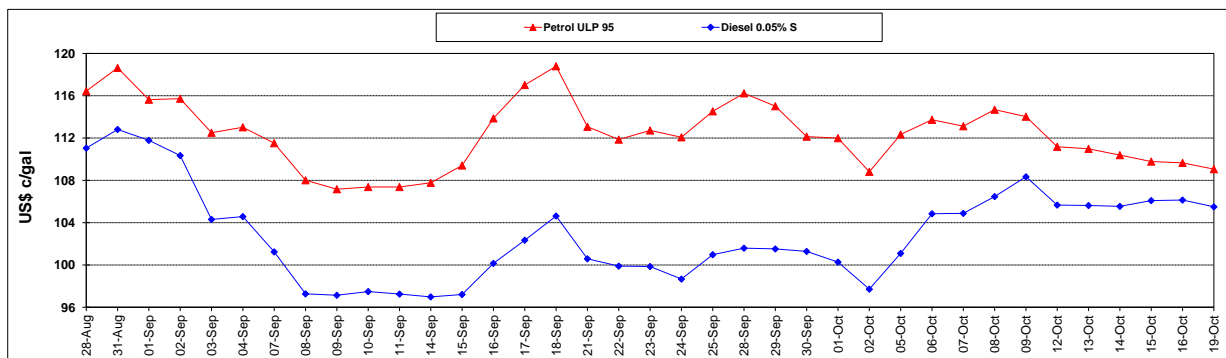
	PETROL 95	PETROL 93	DIESEL 0.05%	DIESEL 0.005%	ILL. PAR.
- MOVEMENT IN INTERNATIONAL PRODUCT PRICES	11.335	8.410	5.662	5.638	(18.354)
- MOVEMENT IN EXCHANGE RATE	5.241	5.149	4.977	4.999	4.681
AVERAGE UNIT OVER/(UNDER) RECOVERY 02/10/2020 - 19/10/2020	16.576	13.559	10.639	10.637	(13.673)

R/\$ EXCHANGE RATE - (R/\$16.4685 - 19/10/2020)

EXCHANGE RATE USED IN BASIC FUEL PRICE



INTERNATIONAL PRODUCT PRICES OF BASKET USED IN BASIC FUEL PRICE



BASIC FUEL PRICE IN SA CENTS PER LITRE

